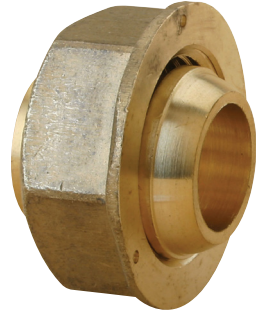
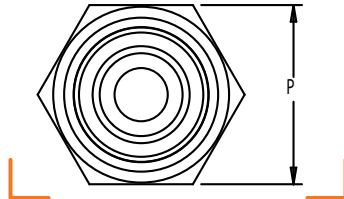
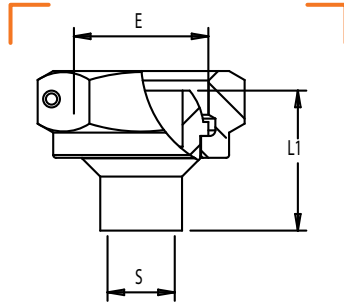


MP












RÉSEAU  
ON  
GPL

## RACCORD 2 PIÈCES DROIT FEMELLE À JSC À BRASER SUR CUIVRE



### CARACTÉRISTIQUES TECHNIQUES

Normes : NF E 29-536 / NF EN 1254-1  
Température : -20°C à +60°C

CALIBRE	ENTRÉE FEMELLE ÉCROU (E)	SORTIE CU (S)	L1	P	MARQUE	RÉF.
12	JSC 1/2"	Cu Ø 12	20	24		0315-002
15	JSC 3/4"	Cu Ø 12	25	32		0315-001
15	JSC 3/4"	Cu Ø 16	26	32		0315-015
15	JSC 3/4"	Cu Ø 18	28	32		0315-003
20	JSC 1"	Cu Ø 22	27	41		0315-005
25	JSC 1 1/4	Cu Ø 18	35	50		0326-021
25	JSC 1 1/4	Cu Ø 22	36	50		0326-023
25	JSC 1 1/4	Cu Ø 28	37	50		0315-007
32	JSC 1 1/2	Cu Ø 35	42	55		0315-009
40	JSC 2"	Cu Ø 42	41,5	70		0315-010
50	JSC 2 1/4	Cu Ø 54	55	75		0315-012